

JAPAN FRUIT GROWERS COOPERATIVE ASSOCIATION

HISTORY

In March 1946 representatives of fruit growers gathered at Okitsu, Shizuoka in order to establish Japan Fruit industry of Japan destroyed by World War II. In November 1948 it was reorganized into Japan Fruit Growers Cooperative Association under Agricultural Co-operative Society Law. The association handles the distribution of domestic fruit, supply of growing and packing materials to its members, information and guidance activities, etc. The association is formed by agricultural cooperative associations for fruit in various prefectures, which further are formed by city, town or village co-operatives which consisted of fruit growers as their members. In one word it is the national association of fruit growers.

AGRICULTURAL POLICIES

The association has carried out various activities such as the establishment of loaning and subsidizing system of the government for the modernization of fruit industry, policy for foreign trade, strengthening of special co-operatives, etc.

These efforts resulted in the extensive consolidation of administrative machine of Ministry of Agriculture & Forestry, above all the setup of Board of Horticulture, the establishment of Fruit Industry Promotion Law, etc.

Further the association is working upon various policies to promote the fruit industry.

OPERATION

1. Distribution

Supply shipment and marketing, together with instruction, statistics, research, study, information, etc.

- (1) For the purpose of protecting the market from confusion, avoiding competition among growing territories and maintaining the price stabilization, the information on growth, marketing and consumption regularly or on occasion will be conducted.
- (2) Expanding of consumption and demand.
- (3) Export of mandarin oranges, pears and apples is handled by Foreign Trade Section. Especially the entire export of mandarin to CANADA and USA is under its control.

2. Purchase & Supply

- (1) The standard of hardboard cartons is set to economize the distribution cost of fruit and simplify the packing, and united purchase of raw paper for hardboard cartons is also carried on.
- (2) Supplying of original materials, for producing of high quality fruits.

3.Information and Guidance Activities

- (1) Guidance for growing of fruit is made through the members (prefectural organizations) and / or directly to the growers, together with instruction for supply and distribution, and also the reinforcement of co-operatives for fruit growers.
- (2) "Kajitsu-Nihon" (Fruit in Japan) is being published monthly since 1946 as a national fruit magazine.
- (3) Japan Fruit Research Organization is founded within this association in October 1948, formed by fruit growers of younger generation with local organizations in all prefectures, in order to contribute to the development of fruit industry by growth research, exchange of informations and other activities.



Head Office

3-2-1, Tokai, Ota-ku, Tokyo, JAPAN
(Foreign Trade section)

TEL: +81-(3)-5492-5423
FAX: +81-(3)-5492-5430



Osaka Branch







1-1-86, Noda, Fukushima-ku, Osaka, JAPAN



Kyusyu Branch

6-23-1, Naka, Hakata-ku, Fukuoka, JAPAN

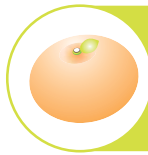
Main Japanese Fruits Schedule

	APR.	MAY	JUNE	JULY	AUG.	SEP.	OCT.	NOV.	DEC.	JAN.	FEB.	MAR.
 Mandarin							○	○	○			
 Japanese Pear					○	○	○	○	○			
 Apple							○	○	○	○	○	
 Persimmon						○	○	○	○			
 Peach			○	○	○	○						
 Grape			○	○	○	○						



Four Seasons of Japan

Main Japanese Fruits List



Mandarin

Main Variety's List [Mandarins]

- **Miyagawa Wase**

Leading cultivar of wase mandarin. Fruit characteristic: size large, oblate; rind orange in color, smooth, thin but somewhat thick among wase mandarin; flesh tender, juicy; seedless; sugar acid rate good; early in maturity, middle to late October.

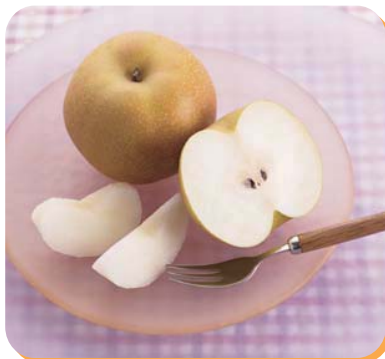
- **Aoshima Unshiu**

Fruit characteristic: size large, flat shape; rind smooth, peel puffing seldom; segment thick; sugar content high, acid medium; keeping quality excellent, till mid March.

Production of Mandarins

No.1	Wakayama	185,400t
No.2	Ehime	168,300t
No.3	Shizuoka	146,200t
	⋮	
Total		1,066,000t

※Statistics of Agriculture, Forestry and Fisheries 2007.



Japanese Pear

Main Variety's List [Japanese pear]

- **Nijisseiki**

Fruit characteristic: size medium; regular and round in shape; skin color pale green to yellow, very attractive; flesh crisp, juicy, mild flavor, sugar content medium; keeps well over 2 weeks under room temperature and for 3 to 4 months in cold room.

- **Niitaka**

Fruit characteristic: orbicular in shape; skin color yellowish brown; size very big; flesh crisp, juicy; keeps well.

- **Kousui**

Leading cultivar of Japanese Pear. Fruit characteristic: size medium; orbicular to oblate in shape; partly russeted, yellowish brown; flesh white, soft, very fine texture, juicy, sweet; quality excellent; keeping quality fairly good; ripens in mid to late August.

- **Housui**

Fruit characteristic: size medium to large; regular and round in shape; skin color russetal brown; flesh crisp, juicy, sugar content high; develops watercore; keeps over 10 days under room temperature and for 3 months in cold room; harvesting at 140 ~ 145 days after full bloom.

Production of Japanese pear

No.1	Chiba	36,500t
No.2	Ibaraki	28,900t
No.3	Tottori	24,700t
	⋮	
Total		296,800t

※Statistics of Agriculture, Forestry and Fisheries 2007.



Apple



Main Variety's List [Apple]

● Fuji

Leading cultivar of Apple. Fruit characteristic: large, average 300g in weight, round to oblate, slightly oblique; skin thick, tough, smooth, brownish red striping over yellow ground color; flesh firm, subacid, juicy, similar to Delicious flavor; dessert quality excellent; keeps well up to 4 months in ordinary storage.

● Mutsu

Fruit characteristic: very large, average weight 400g, round to oblong; skin smooth, yellow without russet, develops red color well after the removal of paper bag, attractive; flesh yellowish white, firm, subacid, juicy; quality excellent; keeps well up to April in ordinary cold storage.

● Sekaiichi

Fruit characteristic: very large, average weight 400 to 600g; globose conical; skin thick, develop well distinct red stripe, attractive; flesh whitish yellow, fine, subacid, juicy; quality very good; keeps well.

● Kinsei

Fruit characteristic: large, average weight 300g; round to round conical; skin thick, tough, rough with russet, yellow; flesh firm, coarse, sweet, juicy, flavor similar to Golden Delicious; dessert quality good; ripens in late October to early November in Aomori; keeps up to 5 month in ordinary cold storage.



Production of Apple

No.1	Aomori	457,900t
No.2	Nagano	170,300t
No.3	Iwate	56,600t
	⋮	
Total		840,100t

*Statistics of Agriculture, Forestry and Fisheries 2007.



Persimmon



Main Variety's List [Persimmon]

● Fuyu

Fruit characteristic: size large; roundish oblate; very attractive; pollination constant, non-astringent; flesh intermediate between fine and coarse; juicy, a small number of brown specks; sugar content medium; keeps well.

● Hiratanenashi

Fruit characteristic: size medium; skin color yellowish orange; attractive; pollination variant, astringent; flesh fine, very soft, very juicy; usually seedless and no brown specks; sugar content low to medium; deastringent fruit quality excellent; keeping quality good.



Production of Persimmon

No.1	Wakayama	52,400t
No.2	Nara	28,100t
No.3	Fukuoka	20,400t
	⋮	
Total		244,800t

*Statistics of Agriculture, Forestry and Fisheries 2007.



Peach



Main Variety's List [Peach]

- **Kawanakajima Hakuto**

Fruit characteristic: large, average 260 ~ 300g; round and uniform, well red blushed, pubescent long, tend to crack; sugar content high, average 13%, low acid; flesh white and firm, juicy, quality very good; matures in mid to late season, about 120 days after full bloom.

- **Hakuho**

Fruit characteristic: mid to large in size, average 250g, round, uniform; skin white with red pigment around pit, soft, melting, fine texture, juicy, sweet, 11 ~ 13% in Brix, acid low, excellent taste for dessert, keeping quality good; clingstone; matures mid to late July.

- **Hikawa Hakuho**

Fruit characteristic: size medium, 200 ~ 250g, shape round, well blushed, resistant to fruit cracking, tend to split-pit, appearance good. Fresh white without red pigment, relatively firm, juicy, sugar content medium with low acid; quality good; matures 85 days after full bloom.



Production of Peach

No.1	Yamanashi	54,100t
No.2	Fukushima	27,800t
No.3	Nagano	18,100t
	⋮	
Total		150,200t

*Statistics of Agriculture, Forestry and Fisheries 2007.



Grape



Main Variety's List [Grape]

- **Kyoho**

Fruit characteristic: cluster size large; winged-conical in shape; berry size very large, 10 ~ 15g; berry shape short elliptic; skin color violet black; seeded, seed very large; flesh good; flavor slight foxy; high sugar, low acid; quality excellent.

- **Delaware**

Fruit characteristic: cluster size small; winged-cylindric in shape; berry size small; round; skin color red gray; slip-skin; seeded; flesh soft; no aroma; sugar content high; acid content medium; Fruit treated with gibberellic acid; seedless.

- **Pione(seedless;new-pione)**

Fruit characteristic: cluster very large, about 600g; berry very large, 16 ~ 18g; skin medium thick, purple black; fresh good, similar to vinifera; high sugar, low acid; flavor excellent. Fruit treated with gibberellic acid: seedless.



Production of Grapes

No.1	Yamanashi	51,400t
No.2	Nagano	30,700t
No.3	Yamagata	21,500t
	⋮	
Total		209,100t

*Statistics of Agriculture, Forestry and Fisheries 2007.